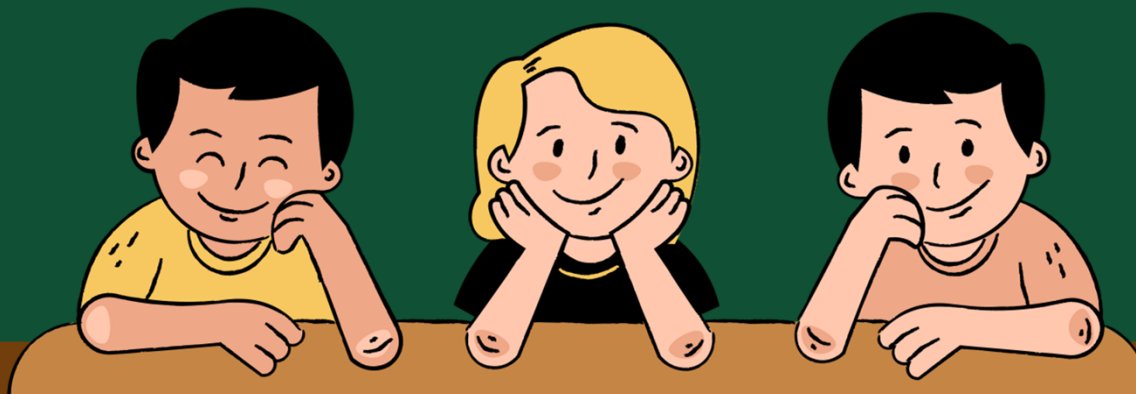




Talk on P6 Matters

23 January 2026



Content



PSLE Matters



School Plans



Full Subject Based
Banding in Sec Schools



How we can work
together



Posting to Sec Sch



Curriculum sharing



DSA & 2025 PSLE Results



PSLE Matters

AL Scores

The scores can
also be found
in the
Shuqunite
Diary
on page 35

AL	Raw Mark Range
1	≥ 90
2	85-89
3	80-84
4	75-79
5	65-74
6	45-64
7	20-44
8	≤ 20

Scoring for Foundation Subjects

- ❑ If your child is taking Foundation subject, that subject will be graded A to C
 - mapped to Standard level subject to derive a student's overall PSLE score (see below)
 - is based on the learning and assessment load of the subjects and informs students of their readiness at secondary level

Grades for Foundation Subjects	Foundation Raw Mark Range	Equivalent Standard Level AL
A	75-100	6
B	30-74	7
C	<30	8

Exemption from Mother Tongue Language

Students who are exempted from Mother Tongue will receive an AL score of between 6 -8 as their Mother Tongue Language

The score is decided by MOE, depending on how well the student has done in English, Math and Science.



Full Subject- Based Banding (FSBB) in Sec School

Full Subject-Based Banding

- Full Subject-Based Banding (Full SBB) is part of MOE's ongoing efforts to nurture the joy of learning and develop multiple pathways to cater to the different strengths and interests of our students.
- We now have a secondary school education where students learn each subject at the level that best caters to their overall strengths, interests and learning needs
- There will no longer be separate Express, N(A), and N(T) courses, since 2024, and students will be in mixed form classes where they can interact with peers of different strengths and interests.

With Full Subject-Based Banding:

At the start of Secondary One, subject levels are determined by PSLE Achievement Levels. Thereafter, students may take these subjects at a more demanding level based on their secondary school performance.

With Full Subject-Based Banding:

PSLE Score	Posting Groups	Indicative level for most subjects at start of Secondary 1
4 – 20	PG3	G3
21 and 22	PG2 or PG3	G2 or G3
23 and 24	PG2	G2
25	PG1 or PG2	G1 or G2
26 – 30 (with AL 7 in EL and MA)	PG1	G1

Subjects Offered at G1, G2 and G3

English Language, Mother Tongue Languages, Mathematics, Science, and Humanities subjects will be offered at G1, G2 and G3.

Students will be grouped in different classes based on their achievement level for each subject.

Offering subjects at a more demanding level

Indicative Level of Most Subjects at Start of S1	PSLE Grade (Standard MTL)	PSLE Grade (Foundation Mother Tongue Language)	Option to offer MTL at
G3	AL 6	ALA	G2
	AL 7-8	AL B-C	G1 or G2
G2	AL 7-8	AL B-C	G1

Offering subjects at a more demanding level

Eligibility criteria			
Humanities subject level at S1	Humanities subjects	School-based assessment	Option to offer Humanities at a more demanding level from S2:
G2	<ul style="list-style-type: none"> ● Geography ● History ● Literature in English 	Aptitude and interest for specific subject	G3 Geography, History and/or Literature in English (i.e., can offer one or more Humanities subjects at a more demanding level)
G1	<ul style="list-style-type: none"> ● Humanities <ul style="list-style-type: none"> ● Social Studies component ● Humanities Exposure Modules (HEMs) in Geography, History and Literature in English 	Aptitude in English Language and G1 Humanities	G2 Geography, History and/or Literature in English (i.e., can offer one or more Humanities subjects at a more demanding level)

Offering subjects at a less demanding level

Students who offered Foundation English, Mathematics and/or Science at PSLE, but are otherwise eligible for G3, may take these subjects at G2 in consultation with their secondary schools. Students with exceptional difficulties in Mother Tongue Languages may offer MTL at G1 or G2.

Common Curriculum subjects

In their mixed form classes, students will spend around one-third of their curriculum time taking a set of six common curriculum subjects:

Examinable

Art

Design &
Technology

Food &
Consumer
Education

Non-examinable

Music

Physical
Education

Character and
Citizenship
Education

These subjects give students more opportunities to interact and learn with classmates of different strengths and interests.

More information

On:

- Upper Secondary School Subjects
- Elective subjects
- National Examinations
- Post secondary admission

can be found in the following link:

<https://www.moe.gov.sg/microsites/psle-fsbb/full-subject-based-banding/secondary-school-experience.html>



Sec 1 Posting

Posting to Secondary School

With the new PSLE scoring system, more students will have the same PSLE Score, and schools will be less differentiated based on cut-off points.

Choice order will be introduced as a tie-breaker to recognise the different considerations that families have in making school choices.

S1 Posting Tie-Breakers (in order of priority)

1. Citizenship (priority given to Singapore Citizens, followed by Permanent Residents and International Students)
2. Choice order of schools
3. Computerised balloting

Posting to Secondary School

Posting to secondary school will still be based on your child's PSLE Score. Your child can submit up to 6 different school choices, in order of preference.

Tie-breakers are used only if there are two or more students with the same PSLE Score vying for the last available place(s) in a school.

Posting to Secondary School

Tie-breakers in the new S1 Posting System

Tie-breakers are used only if there are two or more students with the same PSLE score vying for the last available place(s) in a school. Here's a simplified example.

5 students are vying for the last places in the schools of their choice.

Jane

Singapore Citizen
16 pts

SCHOOL CHOICES:
1) Sch A
2) Sch ...
3) Sch ...
4) Sch ...



Bryan

Singapore Citizen
20 pts

SCHOOL CHOICES:
1) Sch B
2) Sch ...
3) Sch ...
4) Sch ...



Mary

Singapore Citizen
20 pts

SCHOOL CHOICES:
1) Sch A
2) Sch B
3) Sch C
4) Sch ...



Alan

Permanent Resident
20 pts

SCHOOL CHOICES:
1) Sch A
2) Sch B
3) Sch D
4) Sch ...



Rina

Permanent Resident
20 pts

SCHOOL CHOICES:
1) Sch A
2) Sch B
3) Sch D
4) Sch E



Students with better scores will be posted first

Jane has a better PSLE score. She will be posted first, to **School A**.



Bryan, Mary, Alan and Rina have the same score.

As Jane has taken the last available place in School A, Bryan, Mary, Alan and Rina will vie for the last available place in their next choice, **School B**.

Tie-breaker #1: Citizenship

Bryan and Mary are Singapore Citizens. They will have priority to enter **School B**.



Alan and Rina will be tie-broken out as they are Permanent Residents. They will be considered for their next choice, **School D**.

Tie-breaker #2: Choice order of schools

Because Bryan ranked School B higher than Mary, he will be posted to **School B**.



Since Bryan has taken the last place in School B, Mary will be posted to **School C**.



Alan and Rina have both ranked School D as their third choice. They will go through computerised balloting to vie for the last remaining place in **School D**.

Tie-breaker #3: Computerised balloting

Through computerised balloting, Alan is posted to **School D**.



Since Alan has taken the last place in School D, Rina will be posted to her fourth choice, **School E**.



Posting to Secondary School

As with the previous T-score system, if your child takes HCL in primary school, there will be a posting advantage for admissions to SAP schools.







Should he / she score very well (AL 1/ AL2) for MTL and very well too for the other subjects, your child may still be offered HMTL in Secondary school even if he/she did not offer HMTL in primary school.

SECONDARY 1 POSTING



EXAMPLE : Using HCL for Admission into SAP Schools



1st		7	NO HCL
2nd		8	DISTINCTION
3rd		8	MERIT
4th		8	PASS
5th		8	NO HCL
6th		9	DISTINCTION

Students with better PSLE Score will be posted first, even if they did not take HCL.

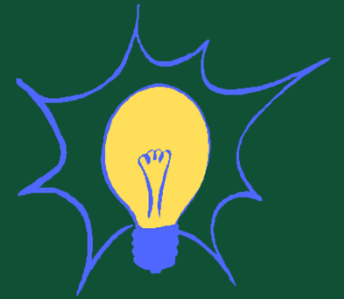
Amongst students with the same PSLE Score, those with better HCL grades will be posted into a SAP school first.

RESTRICTED/ NON-SENSITIVE

Updated on 4 Feb 2021



SAP Schools



Anglican High School

Chung Cheng High School (Main)

Nan Hua High School

Nanyang Girls' High School

Catholic High School

CHIJ (St Nicholas Girls' School)

Maris Stella High School

Dunman High School

Hwa Chong Institution

River Valley High School

Nan Chiau High School

What to expect for Sec 1 Posting

Learn about the considerations when choosing suitable schools for your child.



[https://go.gov.sg/
choosing-sec-schools](https://go.gov.sg/choosing-sec-schools)

What to expect for Sec 1 Posting

The S1 Portal opens for 24-hour online submission from 11.30am on the day of PSLE results release. You can submit your child's 6 preferred school choices online

Things to Consider when Selecting a Secondary School

- ☐ Distance from home
- ☐ Offering of Mother Tongue languages
- ☐ Official Address registered is crucial (In case of Manual Posting)
- ☐ Students with outstanding results will be invited to apply for Edusave Entrance Scholarships for Independent Schools and SAP Schools

Exercising Option for Secondary School posting

Ensure that you are available around PSLE results release period

If necessary, officially assign someone to make the options

N.B. You must register your child for secondary school if he/she is eligible to avoid manual posting.

What to expect for Sec 1 Posting

S1 posting results will be released in end December through the S1 Portal and SMS.



Direct School Admission

Direct School Admission

Direct School Admission for secondary schools (DSA-Sec) allows students to apply to some schools before taking the PSLE.

Students apply based on their talent in sports, CCAs and specific academic areas.

16 accepted the offers

who can apply

P6 students can apply for DSA-Sec based on a wide-range of talents, including:

- **Sports and games**
- **Visual, literary and performing arts**
- **Debate and public speaking**
- **Science, mathematics and engineering**
- **Languages and humanities**
- **Uniformed groups**
- **Leadership**



Our Plans and Strategies

2026 PSLE EXAMINATION CALENDAR (TBC)

Registration	Tuesday, 14 April – Monday, 27 April 2026
Oral Examinations	Wednesday, 12 August and Thursday, 13 August 2026
Listening Comprehension	Tuesday, 15 September 2026
Written Examinations	Thursday 24 September – Tuesday 29 September/ Wednesday 30 September (HMT)

Our Plans & Strategies

- Extended curriculum time – supplementary classes on every Wed & Thu
- Supplementary classes during holidays:
- 2- 5 June and
- 9 – 11 September. All sessions are held in the morning.
- Practice Papers from various schools and past year papers as well as PSLE booklets
- Pull out parallel lessons for students who need focussed coaching
- Timed Practice for all

Our Plans & Strategies

- Subject specific enrichment lessons
- Participation in National/external competitions
- Leadership Opportunities and Training
- Target setting with the students
- Parent-Teacher conferences to address concerns for under-performing students or students with difficulties
- Monitoring and expecting every student to participate actively in lessons
- CCA provides them the break they need from their studies
- Work with us to manage your child's after-school activities



The Road
Ahead: How we
can work
together

Be a Caring and
Enabling
Parent



By practising the 3 Rs:

Respectful

Communication

Role Modelling

Establishing Real

Connections



Respectful Communication

Open, respectful conversations between educators and parents deepen our understanding of each child, enable a coordinated & holistic support for the child and model healthy communication for our students.



Share observations about your child's emotional state, stress levels, and social interactions



Listen to and understand each other's perspectives and concerns regarding your child



Communicate kindly and respectfully with one another



Respectful Communication

Listen, understand, and foster kind words and actions between you and your child



Have regular and genuine conversations with your child

- to better understand what they do online,
- how to stay safe,
- how to use technology in a responsible manner.



Communicate your actions and rationale.

- Let your child know **you care for them** and **want them to be safe online.**



Discuss with your child as you set parental controls to manage device use and stay safe online.



Role Models

Model the skills and values our children need for their mental well-being



Demonstrate healthy ways to manage stress, setbacks and difficult emotions



Show children it is okay to ask for help when struggling



Model self-care



Check out this video on MOE YouTube for tips on how parents can support the social-emotional learning of their children.

Role Models

As parents/guardians, you play a significant role in helping your child establish healthy digital habits, and learn to use technology in a positive and meaningful way.



Role model healthy use of devices and social media and good online behaviour for your child/ward

- E.g. parents/guardians not using devices during mealtimes, respectful online communication



Role modelling respectful conversations –

- Parents are in the best position to role model these skills through daily interactions with your child.
- **Listen to understand**, instead of listening to give advice and offer solutions.



Real Connections

Building strong bonds and genuine connections helps nurture a sense of belonging and emotional safety, supporting mental well-being of your child

Build strong bonds through shared experiences and meaningful conversations



Establish routines that support mental wellness (outdoor time, sufficient sleep, family time, limit screen time, etc)



Parenting a teenager



*Your success as a parent
is not determined by
whether your kids get
into elite schools or
prestigious professions.
The real test of parenting
is not what children
achieve, but who they
become and how they
treat others.*

**We look forward to partnering you to nurture the
stars within your children!**