

# **Welcome to MOE Kindergarten @ Shuqun**

**Open House 2026**

# About our MOE Kindergarten (MK)!

**01**

Our  
Team

**02**

MK  
Programme

**03**

MK Learning  
Environment

**04**

Kindergarten  
Care (KCare)

**05**

A Smooth  
Transition  
into MK

**06**

Registration  
Exercise

**07**

Resources

# Our MK Team



# MK Programme

## **2 Levels**

Kindergarten 1  
Kindergarten 2

## **3 Mother Tongue Languages**

Chinese  
Malay  
Tamil

## **4 Hours**

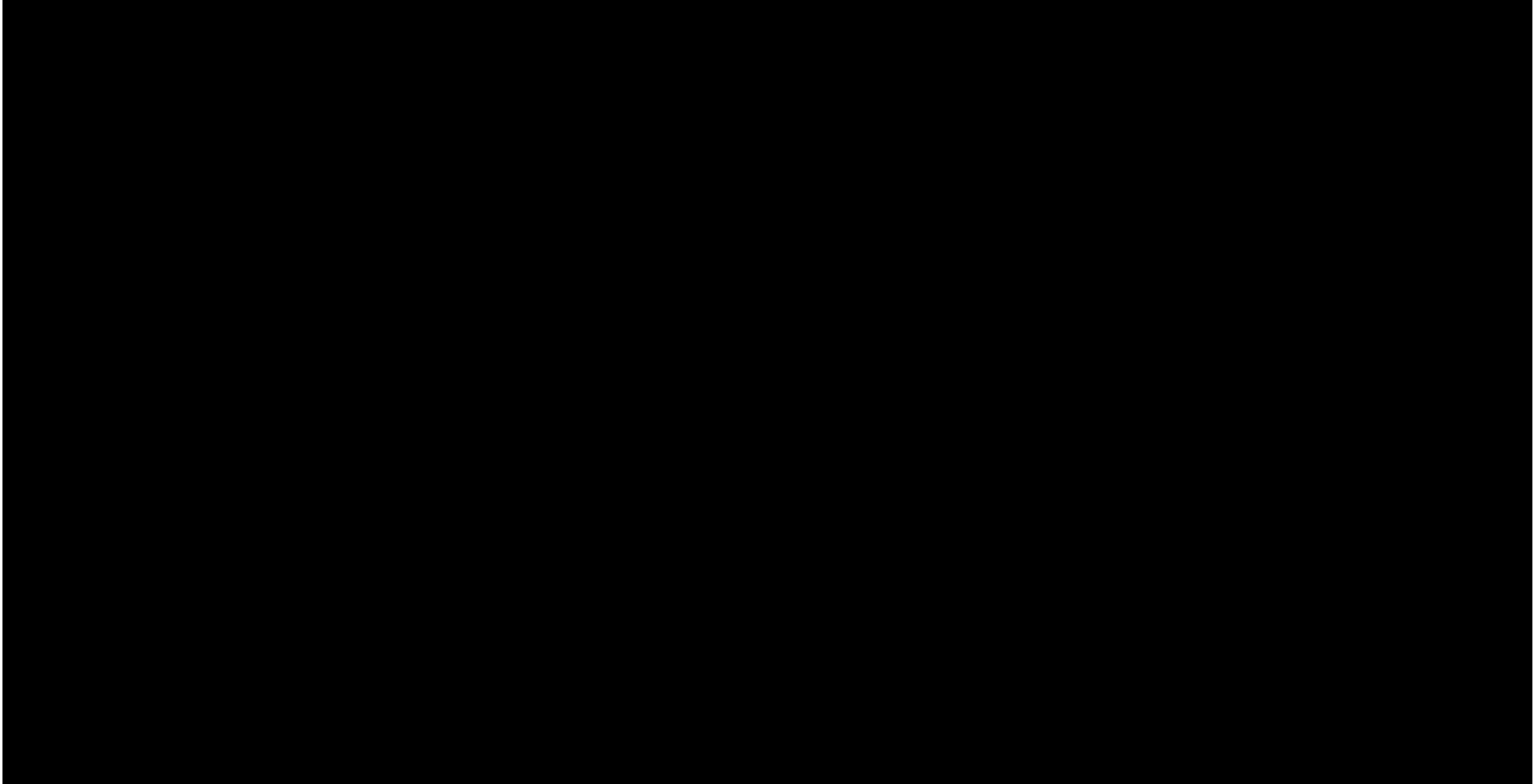
**AM Session**  
8am – 12pm

## **4 Terms**

Follows MOE  
school calendar  
of four terms and  
school holidays

For parents requiring full-day childcare programme, we also offer Kindergarten Care (KCare).

# MK Programme – A Day at an MK



# MK Curriculum

Designed by MOE curriculum specialists and educators with experience in early childhood education and primary school curriculum



Anchored on our **belief** that children are **joyful, curious, active and competent learners**



Guided by key teaching and learning principles in **MOE's Nurturing Early Learners Framework**



**Distinctive Singapore flavour** for children to learn in meaningful contexts



**Strong emphasis on holistic development and learning of two languages** through **two flagship programmes** HI-Light and Starlight (EL & MTL) Programmes

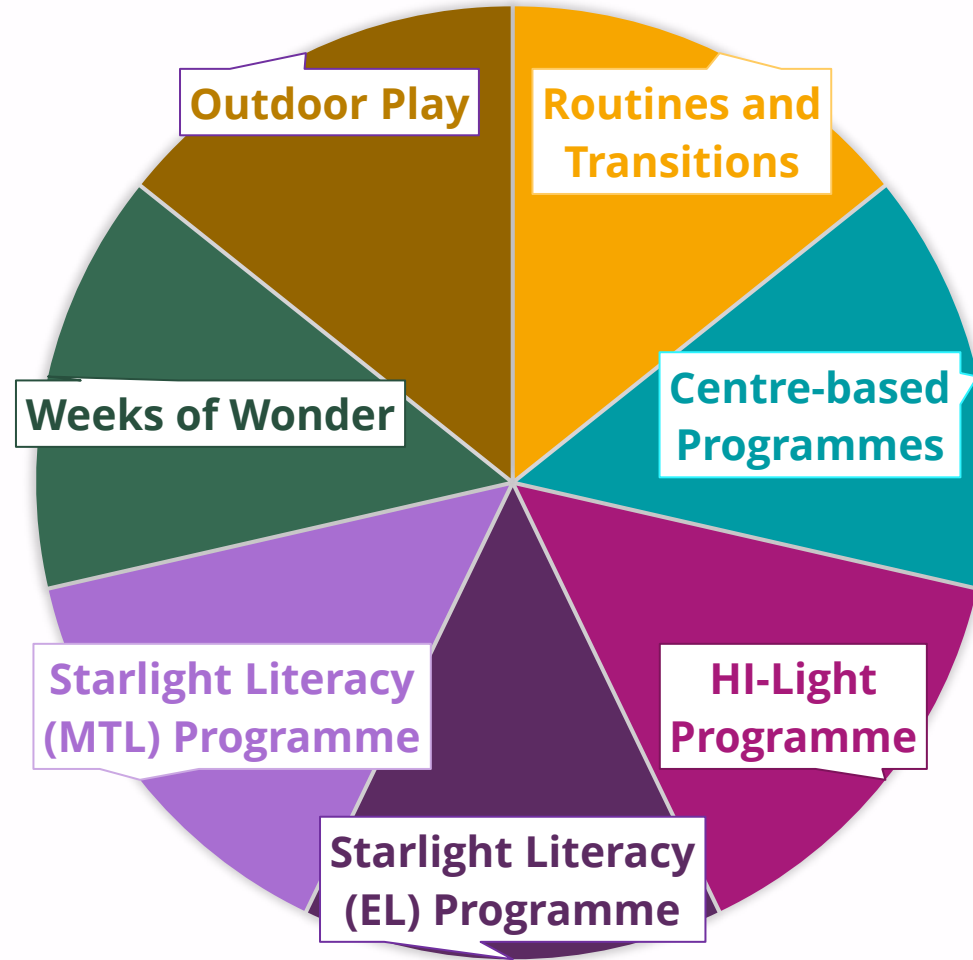


# MK Curriculum

The two-year MK curriculum is intentionally designed to ensure that our children are ready to move on to primary school and for life-long learning.

Develops **ownership of learning, joy of self-motivated learning**, confidence and positive dispositions towards learning

**Ensures continuity in pedagogy**  
e.g. Use of shared-book approach (SBA) in both Starlight (EL) and Stellar (P1-P3)



Develops **responsibility, acceptable behaviour, focus and self control**

Centre programmes **reinforce key knowledge, skills and dispositions** covered in flagship programmes & nurture positive learning dispositions

Puts at the forefront **values, social and emotional competencies and learning dispositions &** focuses on **holistic development** to ensure children are ready to move to primary schools, and lay the foundation for lifelong learning

# MK Curriculum

At MK, we believe in **developmentally-appropriate teaching and learning practices** while ensuring **readiness for learning in primary school and beyond**.



Developed hand  
(about age 7)

5-year-old

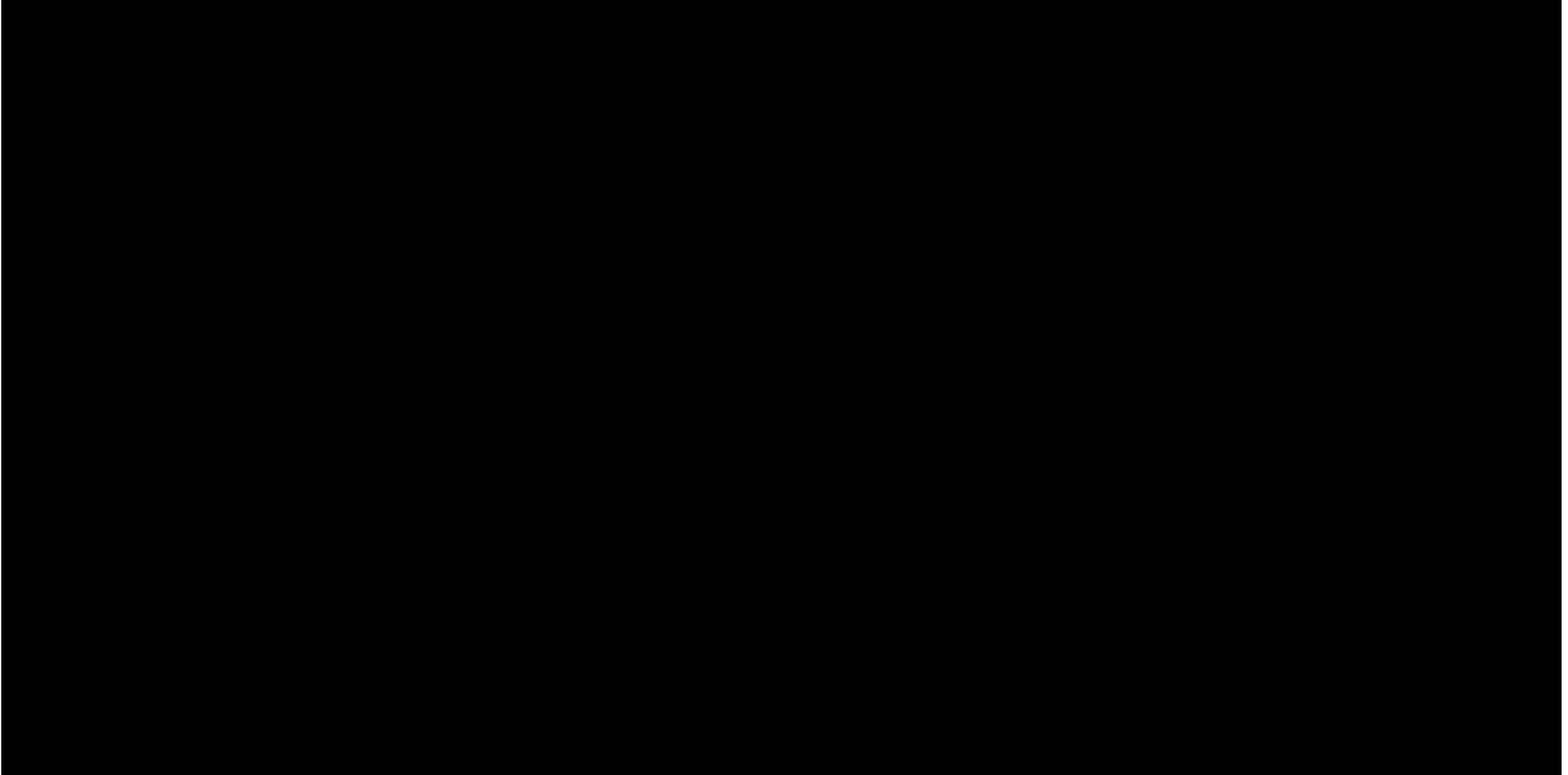
For example, MK children are given ample opportunities to strengthen their finger muscles, hand-eye coordination and core body strength. They are also given many meaningful opportunities to practise writing and copying. However, hand maturation and dexterity takes time and is dependent on each child's physical development (e.g., whether hand skeletal structure is fully developed to shape letters properly). Hence, it is not expected for all children to be able to perfect their penmanship skills by the end of K2.

When we go according to children's pace and provide them with meaningful contexts to learn and practise, they will have the joy of learning and be better able to draw connections and apply their learning appropriately.

**We encourage parents to support your children's learning based on their pace of development!**



# MK Curriculum



# HI-Light Programme

Designed to support **holistic development** of children by nurturing in them:



- Values, social and emotional skills, positive attitudes to learning and executive functioning skills
- Knowledge and skills across the following five learning areas through an **integrated approach**:
  1. Aesthetics and Creative Expression
  2. Discovery of the World
  3. Health, Safety and Motor Skills Development
  4. Language and Literacy
  5. Numeracy

# Starlight Literacy (EL and MTL) Programme

Designed to nurture **early childhood bilingualism** in English and Mother Tongue Language (Chinese, Malay, Tamil)



- Focuses on developing children's interest in language learning, listening, speaking and early reading and writing skills
- Uses Big Books, songs and games set in the local context to make learning fun and meaningful
- Provides opportunities for children to communicate in EL and MTL with confidence and be aware of local tradition and customs
- Encourages families to be involved in activities to enthuse children in language learning

# Weeks of Wonder (WoW)

Designed to promote **collaborative, self-motivated learning**

## I Wonder



Voting for a project topic

Animals	Fruits	Ice cream
		
1	4	15

Let's look for answers in the books and watch a video!

## I Find Out



## I Know



Demonstrated what they have learnt through a cookery activity!

Made their very own ice cream cone using craft materials!



- Children will work together with their friends to investigate topics that interest them that culminates in a WoW project at the end of each term.
- Through the projects, they learn decision-making, collaborative, communication and problem-solving skills.
- In a year, children complete 2 WoW projects in English and 2 in their Mother Tongue Language.

# Sample MK Timetable

Time	Monday	Tuesday	Wednesday	Thursday	Friday
7.50 – 8.00 a.m.	Arrival and Health Check				
8.00 – 8.10 a.m.	Welcome and Circle Time (10 min)				
8.10 – 8.40 a.m.	Outdoor Play (30 min)				
8.40 – 9.20 a.m.	Starlight Literacy (English Language) Programme (40 min)				
9.20 – 9.40 a.m.	Snack Time (20 min)				
9.40 – 10.30 a.m.	HI-Light Programme (50 min)				
10.30 – 11.30 a.m.	Starlight Literacy (Mother Tongue) Programme (60 min)				
10.50 – 11.50 a.m.	Learning Centre Play (20 min)				
11.50 – 12.00 p.m.	Transition & Dismissal (10 min)				



# Centre-based Programmes



▲  
Fitness Fridays



▲  
MTL Cultural Day



▲  
Learning Journeys



# MK Learning Environment

Level 2

# MK Learning Environment

Safe and inviting indoor and outdoor spaces  
intentionally designed to support children's learning

## Every space a learning space

Creative use of available space to  
encourage children to discover and  
explore their surroundings

## Flexible use of space, furniture and resources

Tap on everyday areas and regularly  
repurpose materials for new learning  
experiences

## Every space provides opportunities for purposeful play and quality interaction

Promotes learning through a variety of play,  
hands-on and interactive learning activities  
facilitated by teachers or initiated by children

# Indoor Spaces

Thoughtfully designed classrooms and rich resources to support teaching and learning through play



▲  
Conducive and stimulating  
classroom environment to  
promote holistic development



▲  
Role play materials provide a  
context for children to use  
language and develop  
communication skills



▲  
Variety of manipulatives to  
support development of fine  
motor skills, spatial awareness  
and problem-solving skills

# Outdoor Spaces

Carefully designed to provide a variety of play experiences;  
children spend at least 30 minutes outdoors daily!



Water play features that encourage children to be little investigators, exploring properties of water



Playground equipment that develops children's movement skills and confidence



Garden with features that engage children in sensory experiences



# MOE Kindergarten Fee

- The monthly fee for MK in 2026 is:
  - \$160 for Singapore Citizens
  - \$320 for Singapore Permanent Residents
- Fees are also payable during the school holidays in June and December as fees are calculated on an annual basis and spread over 12 months.
- There are no additional out-of-pocket costs for complementary programmes such as field trips.



# Kindergarten Fee Assistance Scheme (KiFAS)

## About the Early Childhood Development Agency (ECDA)

ECDA, hosted under the **Ministry of Social and Family Development (MSF)**, is the regulatory and developmental agency for the early childhood sector in Singapore. ECDA oversees key aspects of children's development below the age of seven across both private kindergartens and childcare centres.

## What is ECDA KiFAS?

The Kindergarten Fee Assistance Scheme (KiFAS), which is **administered by ECDA**, is a means-tested subsidy to assist families in subsidising kindergarten fees.

## Eligibility Criteria

- Child must be a Singapore Citizen **and**
- Gross monthly household income of \$12,000 and below or per capita income of \$3,000 and below for larger families (5 or more family members who are related by blood, marriage, and/or legal adoption, and who share the same registered residential address)



# Kindergarten Fee Assistance Scheme (KiFAS)

The KiFAS subsidies for the various household income tiers are outlined below:

Gross Monthly Household Income	Gross Per Capita Income	KiFAS Subsidy
\$3,000 and below	\$750 and below	\$159
\$3,001 - \$4,500	\$751 - \$1,125	\$148
\$4,501 - \$6,000	\$1,126 – \$1,500	\$105
\$6,001 - \$7,500	\$1,501 - \$1,875	\$85
\$7,501 - \$9,000	\$1,876 - \$2,250	\$65
\$9,001 - \$10,500	\$2,251 - \$2,625	\$45
\$10,501 - \$12,000	\$2,626 - \$3,000	\$15

\* Based on the MK School Fee of \$160 per month and subject to a minimum co-payment amount from the parents.

# Kindergarten Fee Assistance Scheme (KiFAS)

## Minimum Attendance Requirement

- The child must **attend at least one day per month** at the kindergarten to receive subsidies, unless a valid medical certificate (MC) covers the entire month's absence (subject to ECDA's approval)..
- Failure to meet the attendance requirement will result in the full kindergarten fee being payable for that month.

# Kindergarten Care (KCare)

For parents who require a full-day service for their child

# KCare Team



# Kindergarten Care (KCare)

- Provides care services in a safe and conducive environment for children to play, explore and discover through specially designed environments with carefully chosen resources^
- Time set aside for adequate rest
- Autonomy for children to decide what and how they want to play
- Situated within MK premises
- Operates till 7 p.m., from Mondays to Fridays, including school holidays\*
- Operated by MOE-appointed service providers, based on MOE requirements and guidelines



\*Closes for 6 days each year, in addition to gazetted public holidays, Teachers' Day and Children's Day.



# KCare Environment

Specially designed to provide a variety of experiences for children to play, explore and discover



▲  
Sand and water play area



▲  
Sensory garden



▲  
Cookery





# KCare Programme

## a) Modular Activities

- Art & Craft
- Cookery
- Gardening
- Music, Movement & Dramatisation
- Sand & Water Play
- Tinkering



## b) Free Play

- Construction & Manipulative Free Play
- Dramatic Free Play
- Outdoor Free Play
- Sand and Water Free Play



## c) Dedicated Reading Time

- Daily dedicated reading time
- Nurture a love for reading and develop good reading habits



# Sample KCare Timetable (School Terms)

Time	Activities
7.00 a.m. – 8.00 a.m.	Arrival and Health Check at MOE Kindergarten
8.00 a.m. – 12.00 p.m.	MOE Kindergarten
12.00 p.m. – 12.15 p.m.	Arrival and Health Check
12.15 p.m. – 1.15 p.m.	Lunch and Wipe down
1.15 p.m. – 1.30p.m.	Dedicated Reading Time
1.30 p.m. – 2.30 p.m.	Rest/ Nap
2.30 p.m. – 3.00 p.m.	Afternoon Snack
3.00 p.m. – 4.00 p.m.	MOE Modular Activities
4.00 p.m. – 5.00 p.m.	MOE Modular Activities (Outdoor)/ Outdoor Free Play
5.00 p.m. – 7.00 p.m.	Indoor Free Play, Quiet Time and Dismissal

*Note:*

- *MK will receive KCare children at arrival between 7.00 a.m. and 8.00 a.m.*
- *Both MK and KCare staff will work out an arrangement for the smooth handover of the children.*
- *Outdoor activities can only be conducted after 4.00 p.m.*

# Sample KCare Timetable (School Holidays)

Time	Activities
7.00 a.m. – 9.00 a.m.	Arrival and Health Check - Breakfast and Indoor Free Play
9.00 a.m. – 11.00 a.m.	Holiday Activities (Outdoor) + Morning Snack
11.00 a.m. – 11.15 a.m.	Dedicated Reading Time
11.15 a.m. – 12.15 p.m.	Modular Activities (Indoor)
12.15 p.m. – 2.45 p.m.	Lunch, Clean-up, Rest/Nap
2.45 p.m. – 3.00 p.m.	Dedicated Reading Time
3.00 p.m. – 3.30 p.m.	Afternoon Snack
3.30 p.m. – 5.00 p.m.	Holiday Activities (Indoor)
5.00 p.m. – 7.00 p.m.	Indoor / Outdoor Free Play, Quiet Time and Dismissal

*\*Outdoor activities can only be conducted before 11.00 a.m. and after 4.00 p.m.*

# KCare Fees

Singapore Citizen	Singapore Permanent Resident
\$200	\$350
(Fee shown above is after \$150 basic subsidy*)	

You may utilise the KCare Additional Subsidy Eligibility Calculator available on the MOE website to determine if your child qualifies for the KCare additional subsidy:

<https://moe.gov.sg/preschool/moe-kindergarten/kindergarten-care>

\* Child must meet the minimum attendance requirement of one day per month at the centre to receive subsidies, unless a valid medical certificate (MC) covers the entire month's absence (subject to MOE's approval).

# A Smooth Transition to MK

Level 2

# Kindergarten 1 (K1) Orientation

- You and your child will be invited to an orientation session before the start of the K1 year, where you will meet with the kindergarten teachers and classmates. This will take place sometime in Oct / Nov 2026. More information will be shared at a later time.
- This session will help to familiarise your child with the new learning environment in the MK.





# First Day of School

- For the first day of school, you are welcome to accompany your child to the MK to help him or her through the routines in the kindergarten.
- Teachers at the MK will keep a look out for children who experience adjustment challenges and work together with the parents to support the child's transition to the new learning environment.



# Partnering Families & the Community

**Strong partnerships with families and the community enrich children's learning experiences**

- Effective communication
- Active engagement
- Meaningful collaboration





# Location within a Primary School

Supports smooth transition to primary school



▲  
Familiarising MK children with primary school environment and routines



▲  
Close collaboration between primary school and MK educators to ensure common understanding of children's development



▲  
Joint activities between primary school and MK to provide opportunities for MK children to interact with primary school teachers and students 35

# Leading and Inspiring Families of Early Learners@MK

## Leading and Inspiring Families of Early Learners @ MOE Kindergarten (LIFE@MK)

- A series of centre-based workshops conducted by MK for parents
- Provides practical tips and advice on how parents can support children's learning at home
- Topics focus on holistic development, language development, how children learn and supporting children's transition from pre-school to primary school





# MK-Early Years Centre (EYC) Partnership

- Partnering three Anchor Operators:
  - E-Bridge Pre-School (E-Bridge)
  - NTUC My First Skool (MFS)
  - PCF Sparkletots Preschool (PCF)
- In this partnership, children aged two months to four years attend the partner EYC(s) offered by E-Bridge, MFS or PCF. Eligible Nursery 2 (N2) children enrolled in our partner EYC(s) are guaranteed a place at MK@Shuqun and can choose to enroll at MK@Shuqun to continue their K1 and K2 programme.
- Our MK's partner EYC(s) are:
  - PCF Sparkletots @ Jurong Spring Blk 515 (EY)





# Why Choose MK?

- Quality & Affordable Kindergarten Education
- Caring & Skillful Educators
- Spacious & Rich Learning Environment
- Holistic Curriculum in English & all Three Mother Tongue Languages
- Smooth Transition to Primary School



# Registration Exercise

2026

# Info on MK Registration Exercise

- Online registration for 2027 K1 admissions for both Open Admissions (OA) and Early Years Centre (EYC)\* children will open from 9 a.m. on Monday, 23 March 2026 and close at 4.30 p.m. on Tuesday, 31 March 2026^.
- Open to Singapore Citizen and Permanent Resident children born between 2 Jan 2022 and 1 Jan 2023 (both dates inclusive).
- Register your child at <https://go.gov.sg/mk-register> during the registration period.
- You will be notified of the OA# registration outcome via email by 1 Jun 2026.

\*Eligible children from EYCs will receive an MK notification letter through the EYC that your child is enrolled in. More information on the registration process will be provided in the notification letter. If you decide to register your child in a non-partner MK, you should apply via Open Admissions (OA) application form. Your OA application will be subject to the same conditions as all other OA applications.

^Outside this registration period, parents can contact the MK directly to check for vacancies. If you miss the online registration period, you can contact your preferred MK directly to submit a waitlist application. Admission is subject to availability of places.

#For children who are offered a K1 place in the partner MK via EYC admissions, you will need to accept the offer by the specified deadline indicated in your outcome letter.

# Share your feedback with us!



<https://go.gov.sg/feedbackmkoh2026>

# Join us at MOE Kindergarten – **We Are Hiring!**



Do you have / Do you know someone who has..



**An energetic  
personality?**



**A passion to nurture  
the next generation?**



**Dedication towards  
sparking curiosity?**

Find out more about  
our MK careers at

[go.gov.sg/becomemke](https://go.gov.sg/becomemke)



Join our mailing list to stay  
updated of career opportunities

[go.gov.sg/moecareersml](https://go.gov.sg/moecareersml)



**Join MOE Kindergarten as an English Medium or  
Mother Tongue Language Kindergarten Teacher**



# Resources

# We get you ready for your preschool journey

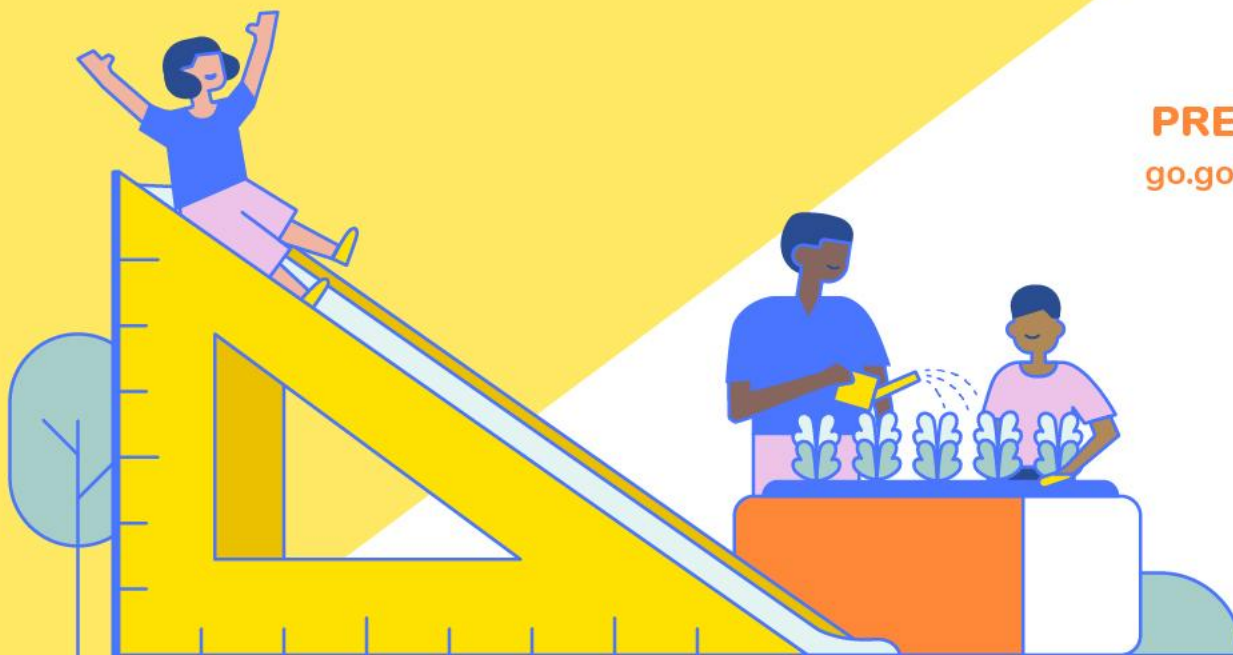
**SCHOOLBAG**  
PARTNERING YOU ON YOUR EDUCATION JOURNEY

Hear from fellow parents and MOE educators on how your child can get more out of their school experiences. Subscribe to [Schoolbag.edu.sg](https://schoolbag.edu.sg) today!

SCAN TO SUBSCRIBE



[go.gov.sg/schoolbag-subscribe](https://go.gov.sg/schoolbag-subscribe)



**CHECK OUT  
SCHOOLBAG'S  
PRESCHOOL SECTION:**  
[go.gov.sg/schoolbag-preschool](https://go.gov.sg/schoolbag-preschool)

Brought to you by  
MOE Communications  
and Engagement Group

# Check out these resources from MOE

## Parent Kit



## Parent Kit

[www.moe.gov.sg/parentkit](http://www.moe.gov.sg/parentkit)

Each Parent Kit issue contains bite-sized actionable tips with supporting resources for parents to help them support their child in their education journey.

## MOE Social Media Platforms



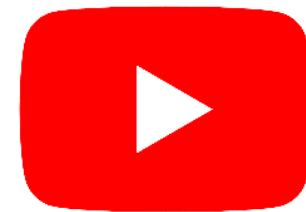
[www.instagram.com/parentingwith.moesg](http://www.instagram.com/parentingwith.moesg)



[www.facebook.com/moesingapore](http://www.facebook.com/moesingapore)



[www.instagram.com/moesingapore](http://www.instagram.com/moesingapore)



[www.youtube.com/moespore](http://www.youtube.com/moespore)

# Parent-Child Activity Book is readily available online:

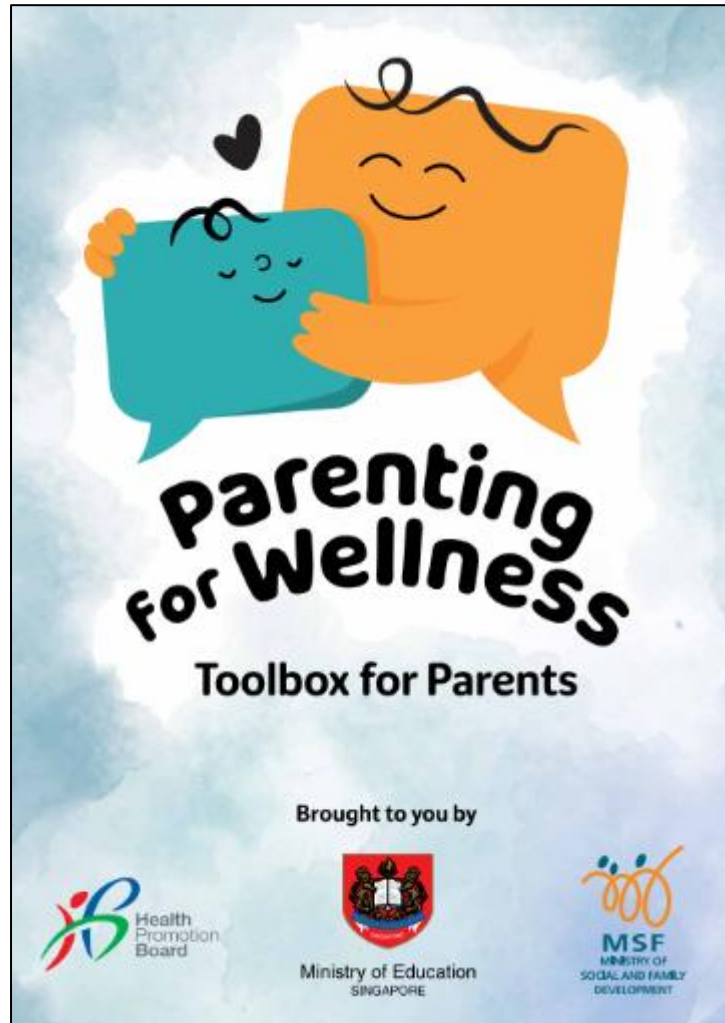
**10 TIPS FOR PARENTS** to help you navigate your child's first year in primary school.

**Chat** with your child  
**Boost** their confidence  
**Practise** various scenarios  
**Create** something interesting  
**Thank** others for their help  
**Pledge** to do things together





# Latest Resource: Parenting for Wellness Toolbox



An initiative to empower parents with key knowledge and skills to build strong parent-child relationships, strengthen their children's mental well-being and resilience, and parent effectively in the digital age.

The Toolbox for Parents **comprises bite-sized practical tips and strategies for parents**, such as ways to create a safe and nurturing home environment, build resilience in children, and stay safe online.





# School-Home Partnership

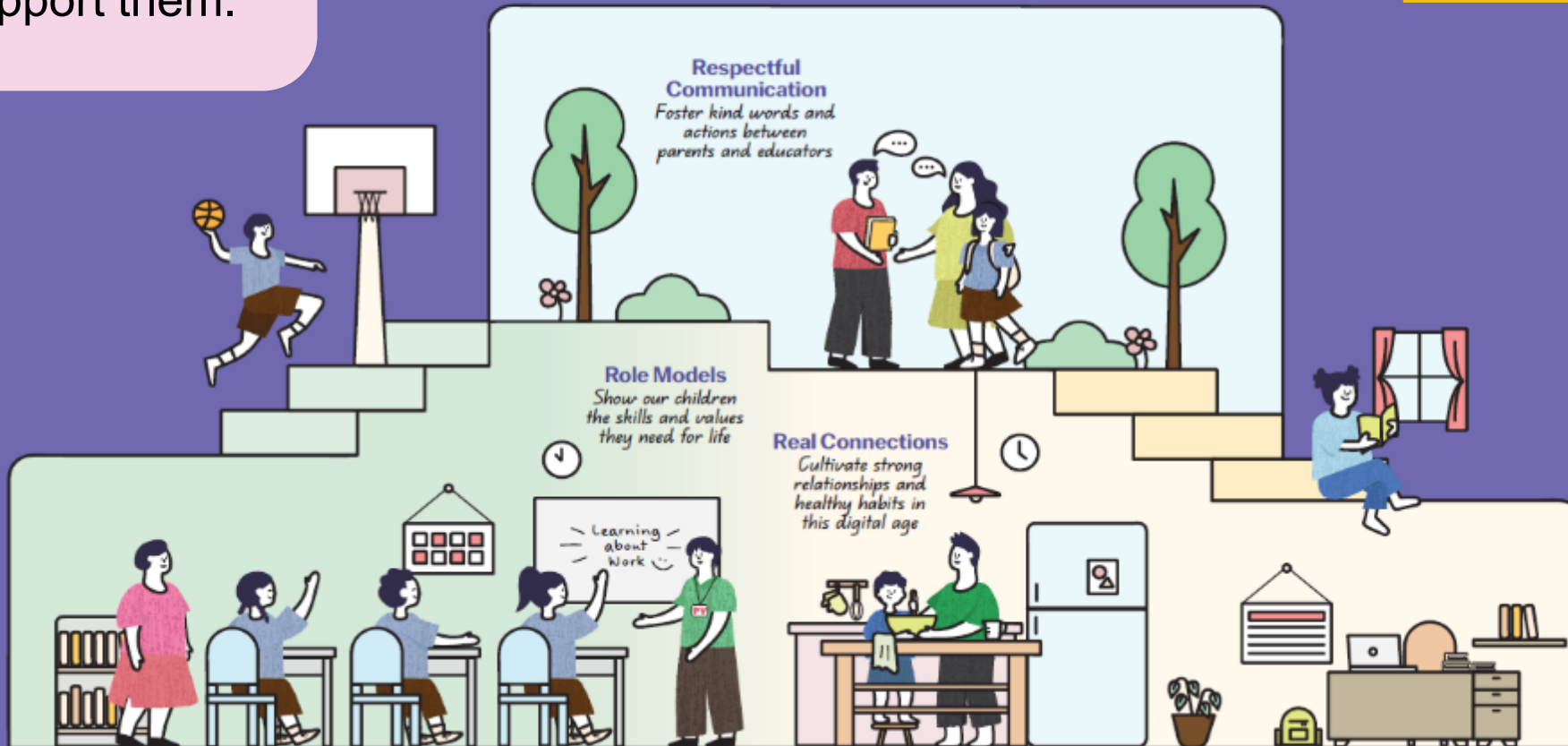
Our children do best when schools and parents work hand in hand to support them.

Guidelines for School-Home Partnership

## Raising a Happy, Confident, and Kind Generation Together

### Note for schools:

For more information that can be included in this section, please refer to the notes section.



# 3 areas we can work together on to foster School-Home Partnership

**1** Respectful Communication

**2** Role Models

**3** Real Connections



# Respectful Communication

## Foster kind words and actions between schools and educators



Listen to and understand each other's perspectives and concerns regarding each child



Communicate kindly using official channels. Teachers are not required to share their personal mobile numbers



Respect each other's time by communicating during working hours



**Note for schools:** For more information that can be included in this section, please refer to the notes section.

# Role Models

**Show our children the skills and values they need for life**



Find joy in everyday experiences with our children



Instill confidence by encouraging responsibility and believing in our children's abilities



Model good values in words and actions



*Check out this video on MOE YouTube for tips on how parents can support the social-emotional learning of their children.*

**Note for Schools:** For more information that can be included in this section, please refer to the notes section.

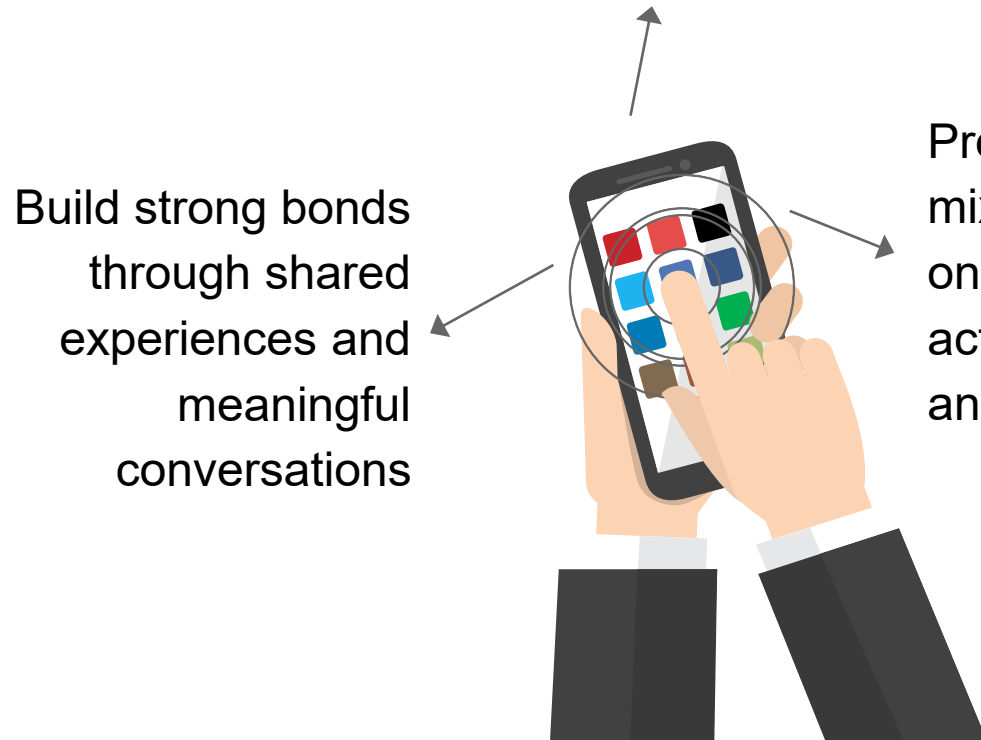
# Real Connections

**Cultivate strong relationships and healthy habits in this digital age**

Establish good habits for our children to stay confident and in control of their technology use

Build strong bonds through shared experiences and meaningful conversations

Provide a balanced mix of engaging online and offline activities, at school and at home







Ministry of Education  
SINGAPORE



**It's MK Experience Time!**